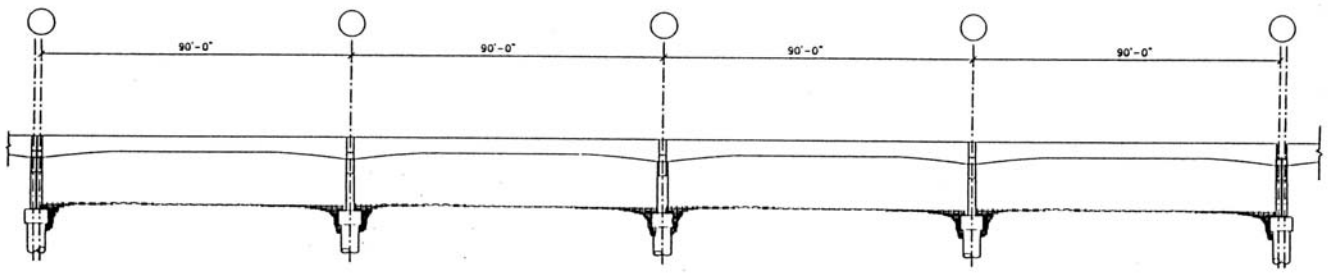


Figure 1. The Las Vegas Monorail Route

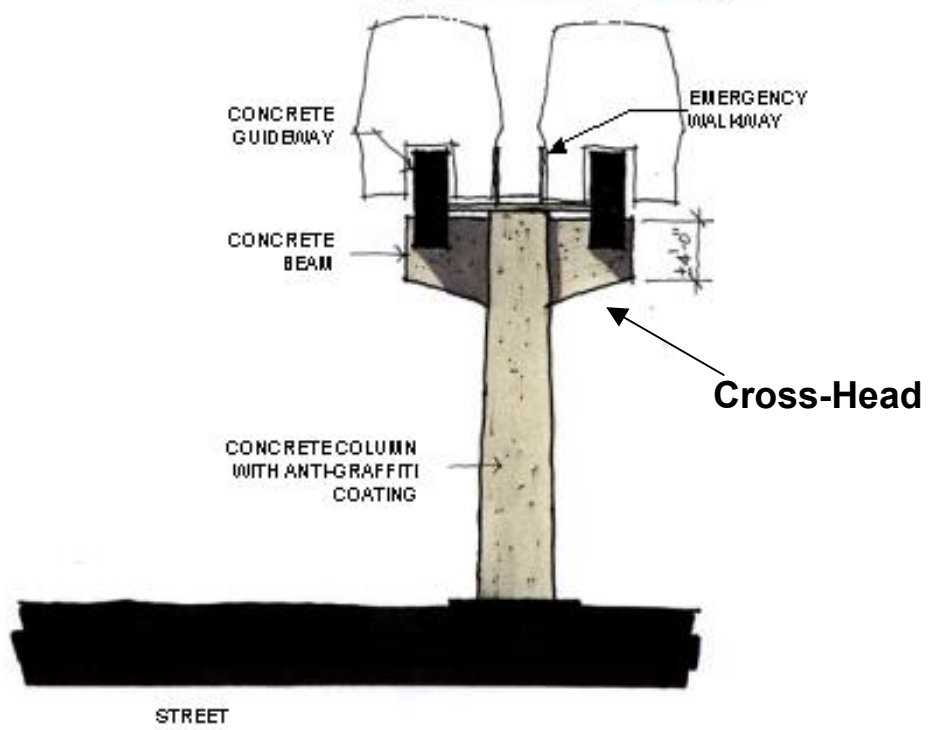


Figure 2. The MGM/Bally's Monorail



TYPICAL GUIDEWAY FRAME ELEVATION

Figure 3



Typical Monorail Cross Section

Las Vegas Monorail Team ©

Figure 4

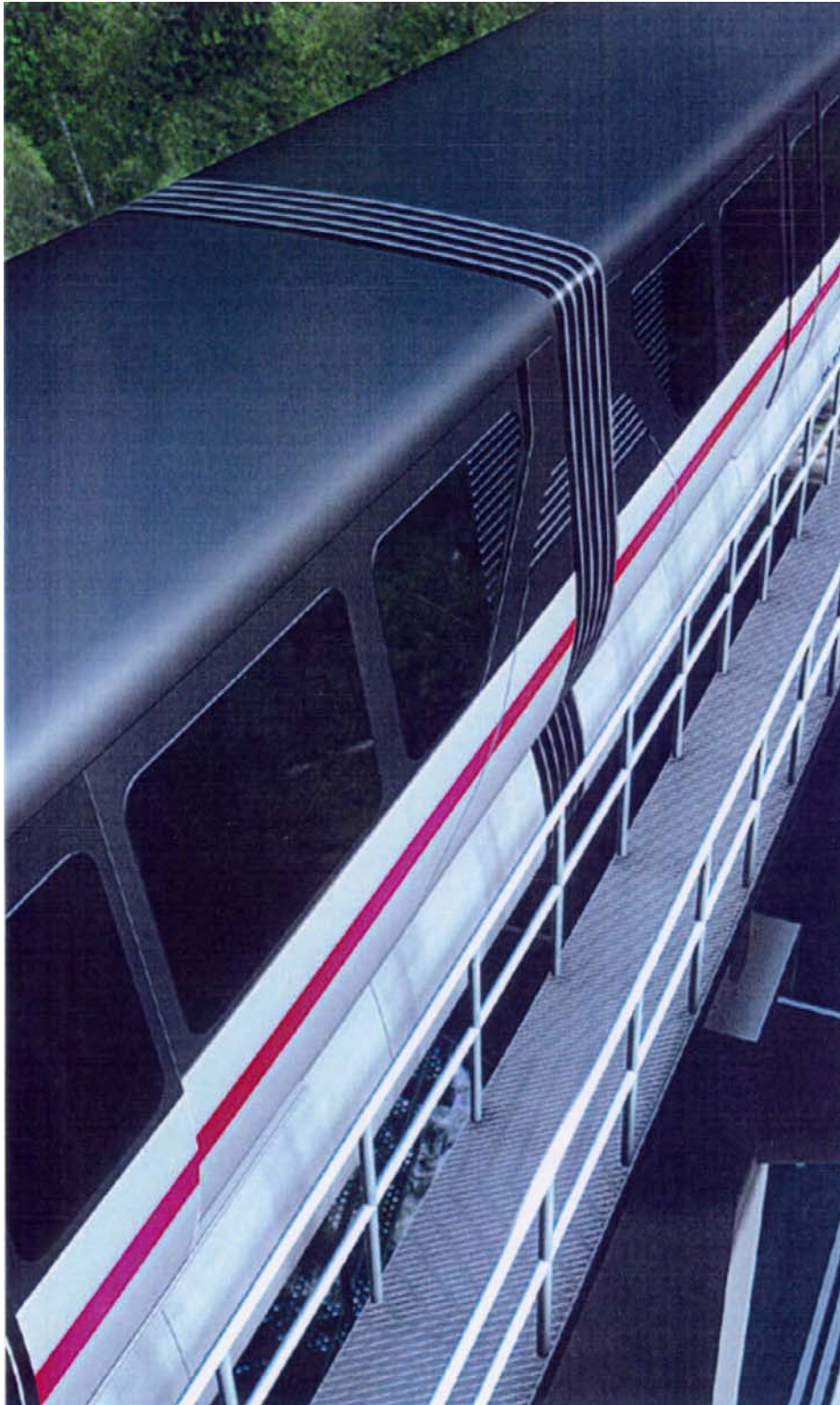


Figure 5. Typical Emergency Evacuation Walkway

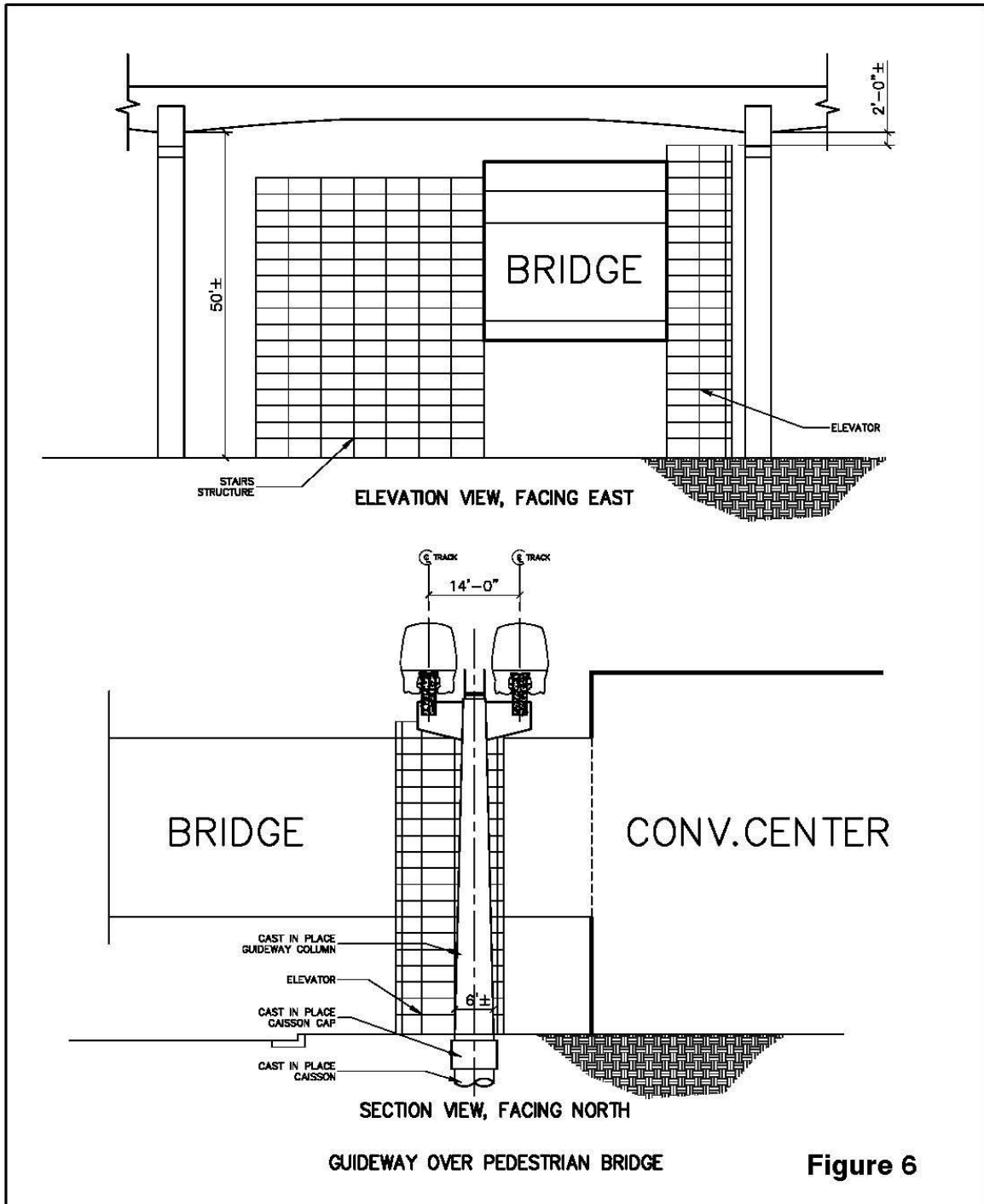


Figure 6

Figure 6. Guideway at Las Vegas Convention Center

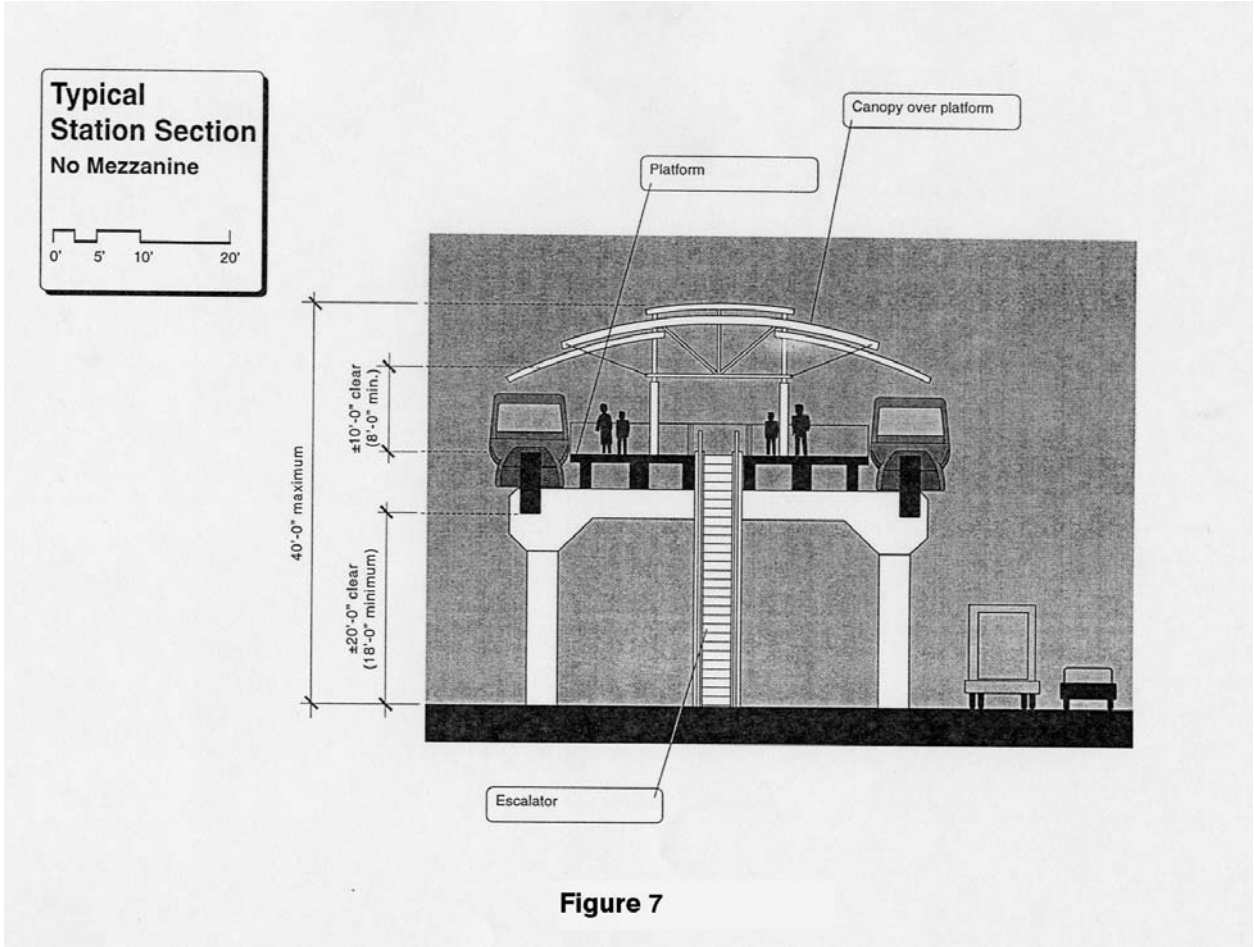


Figure 7

Figure 7. Center Platform Station With No Mezzanine

**Typical
Station Section
Upper Mezzanine,
Center Platform**

0' 5' 10' 20'

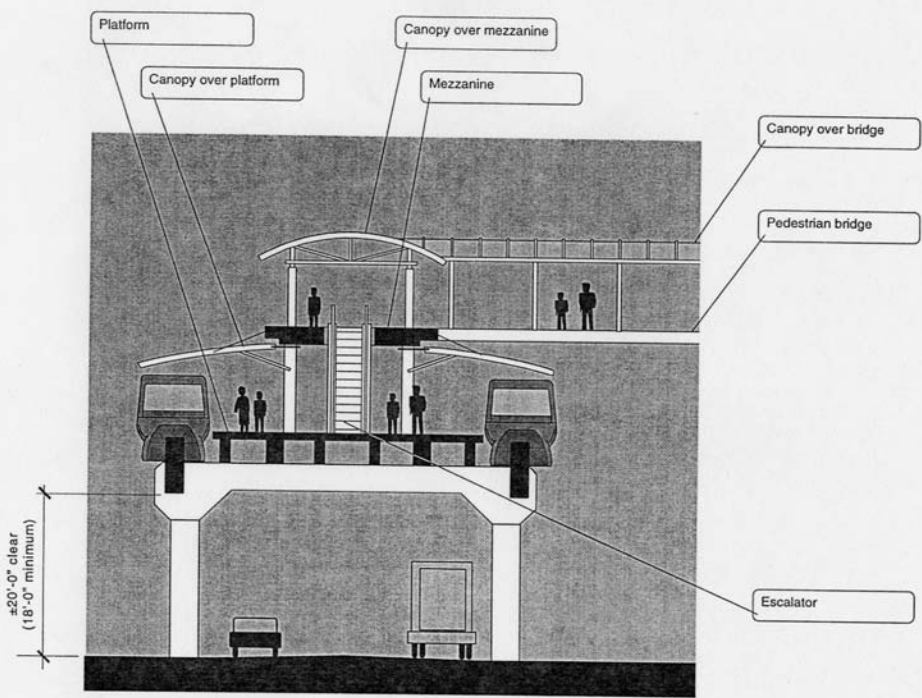


Figure 8

Figure 8. Center Platform Station With Upper Mezzanine

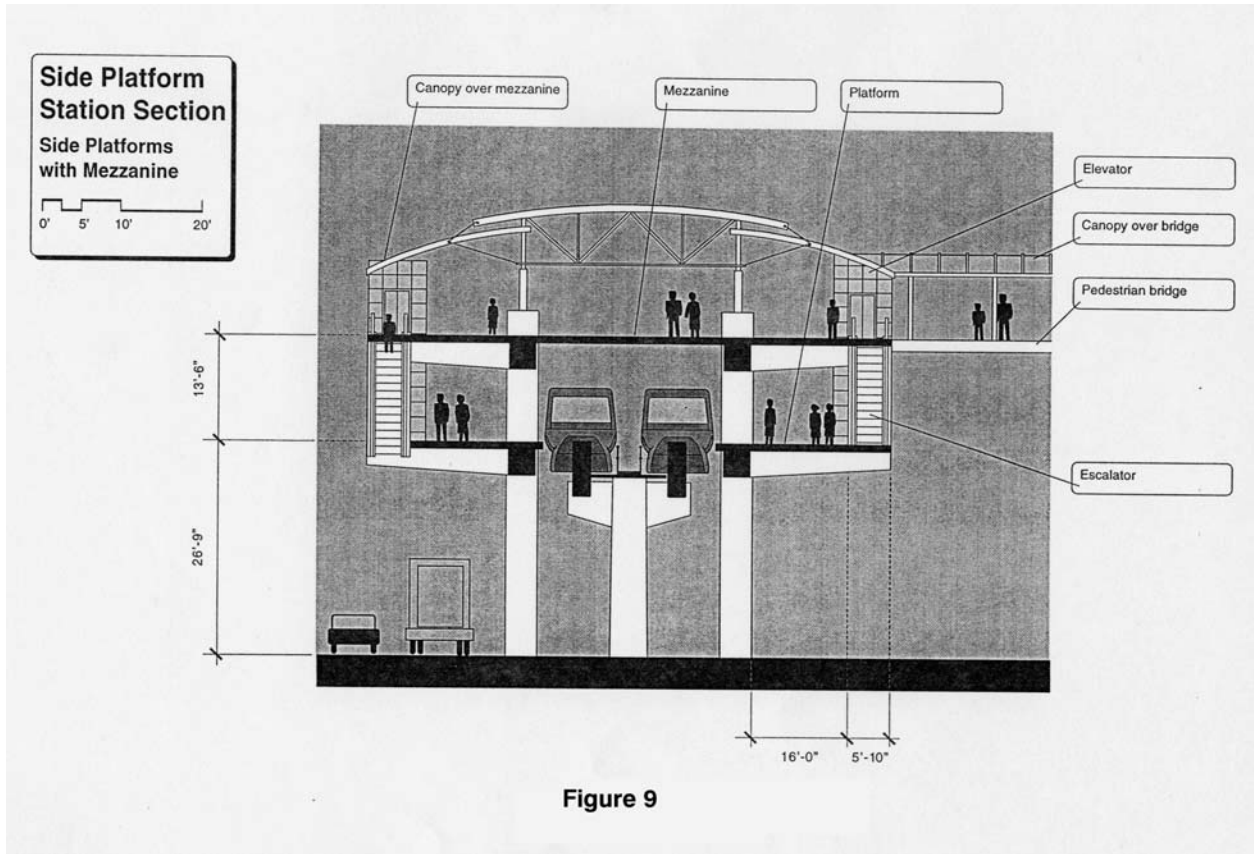


Figure 9. Side Platform Station With Upper Mezzanine

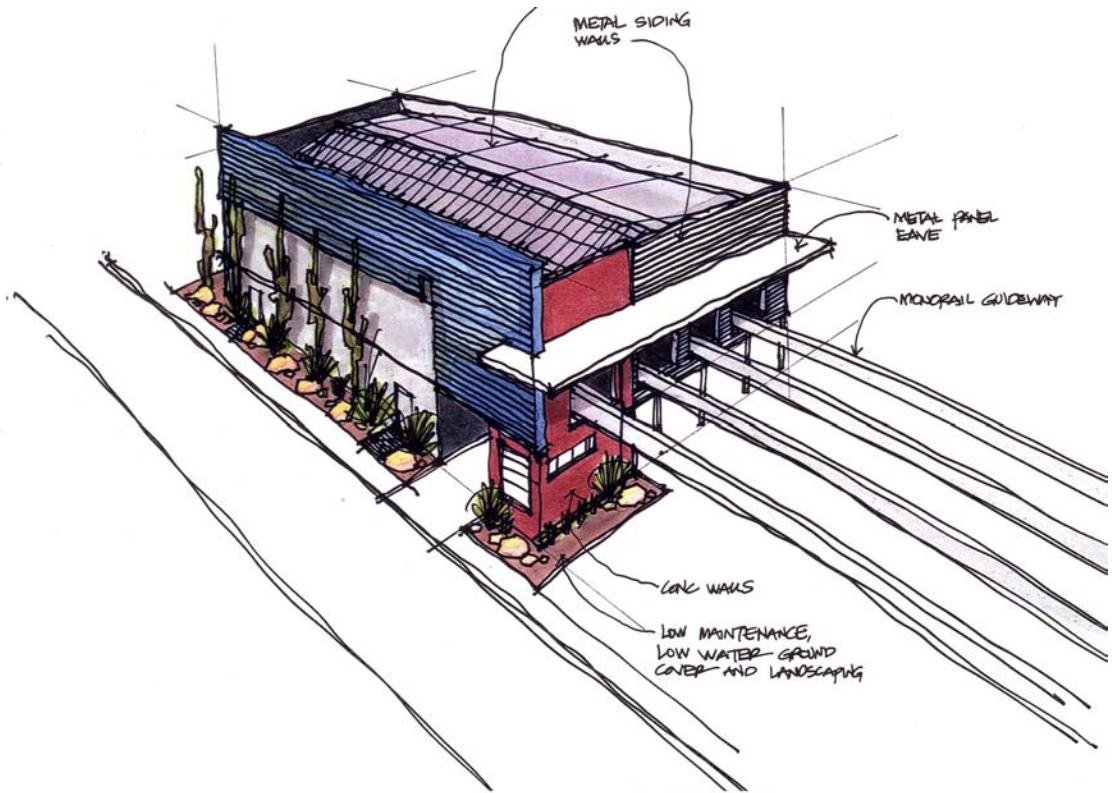


Figure 10. Operations and Maintenance Facility

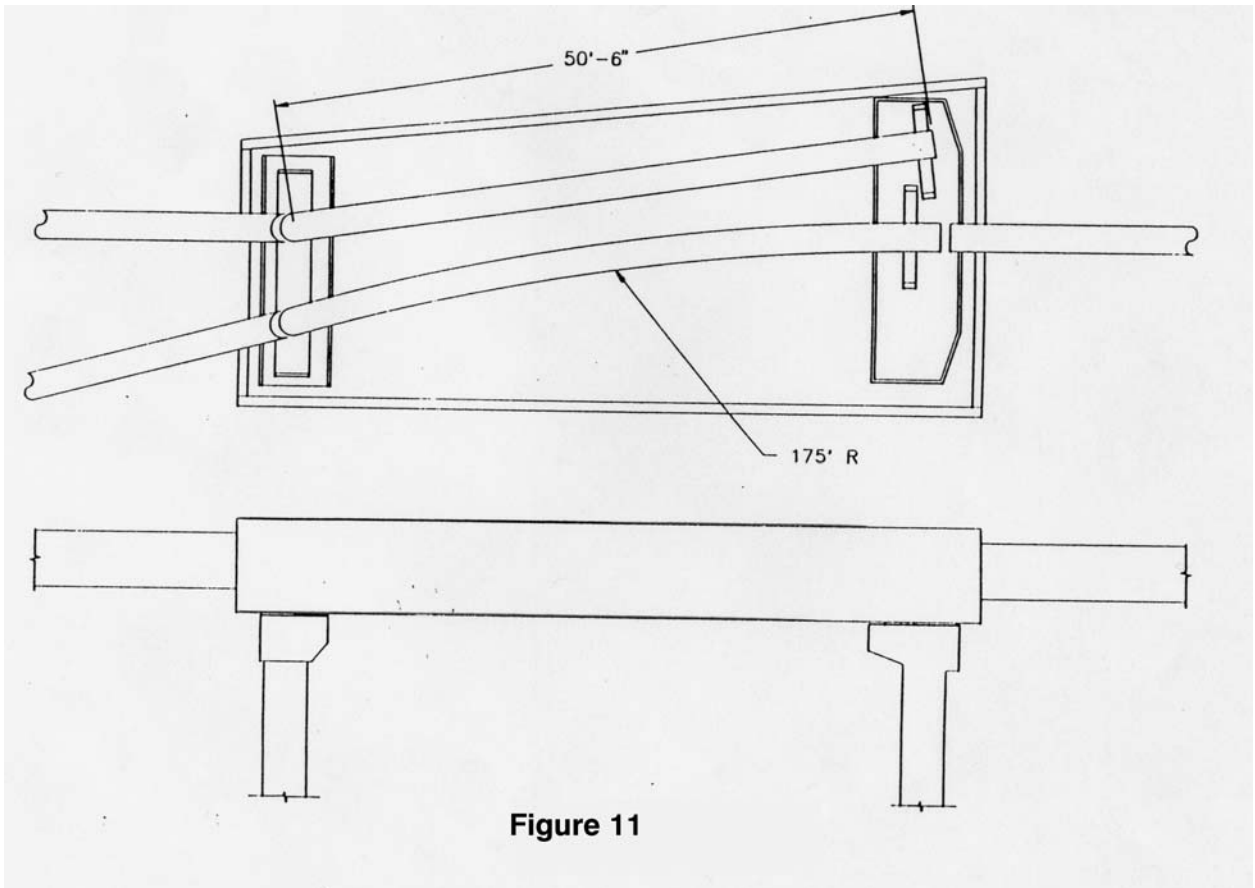


Figure 11

Figure 11. Turnout Switch

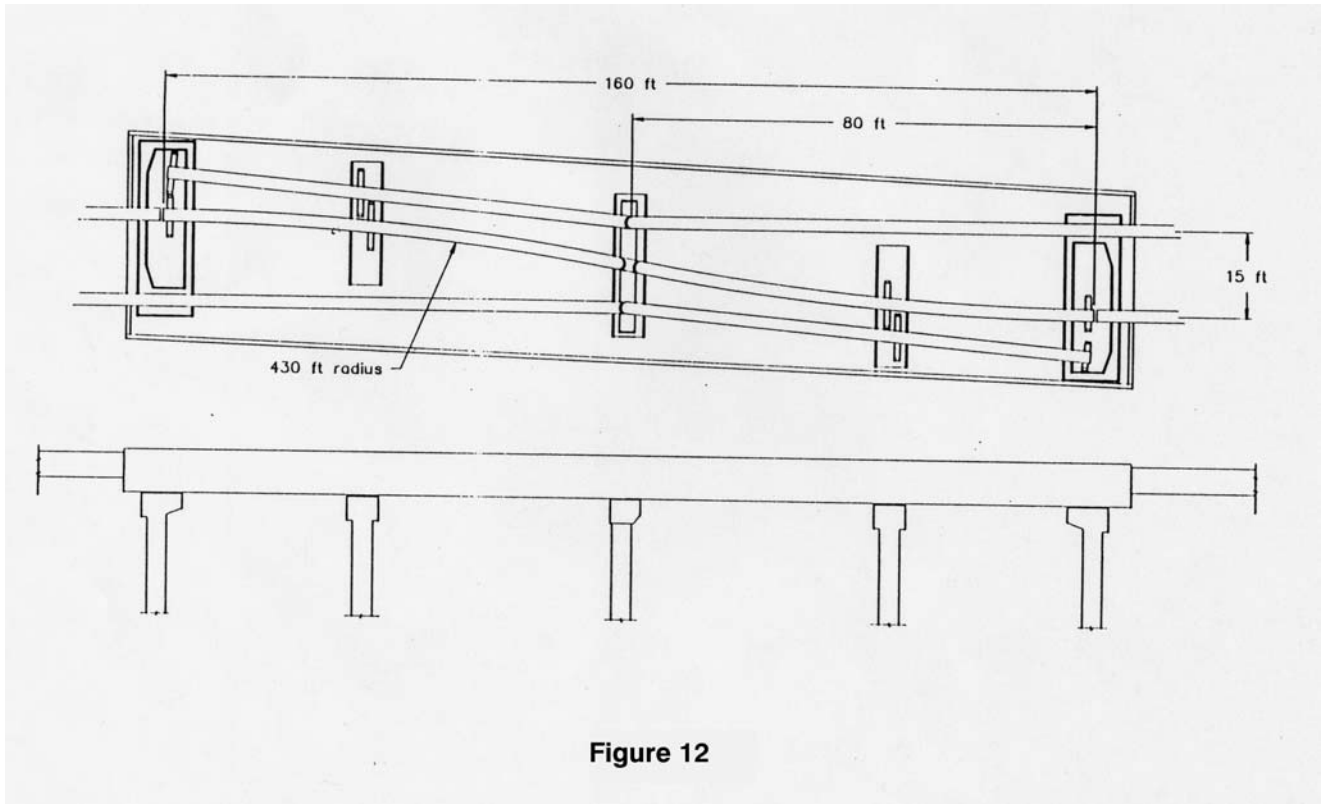


Figure 12. Crossover Switch

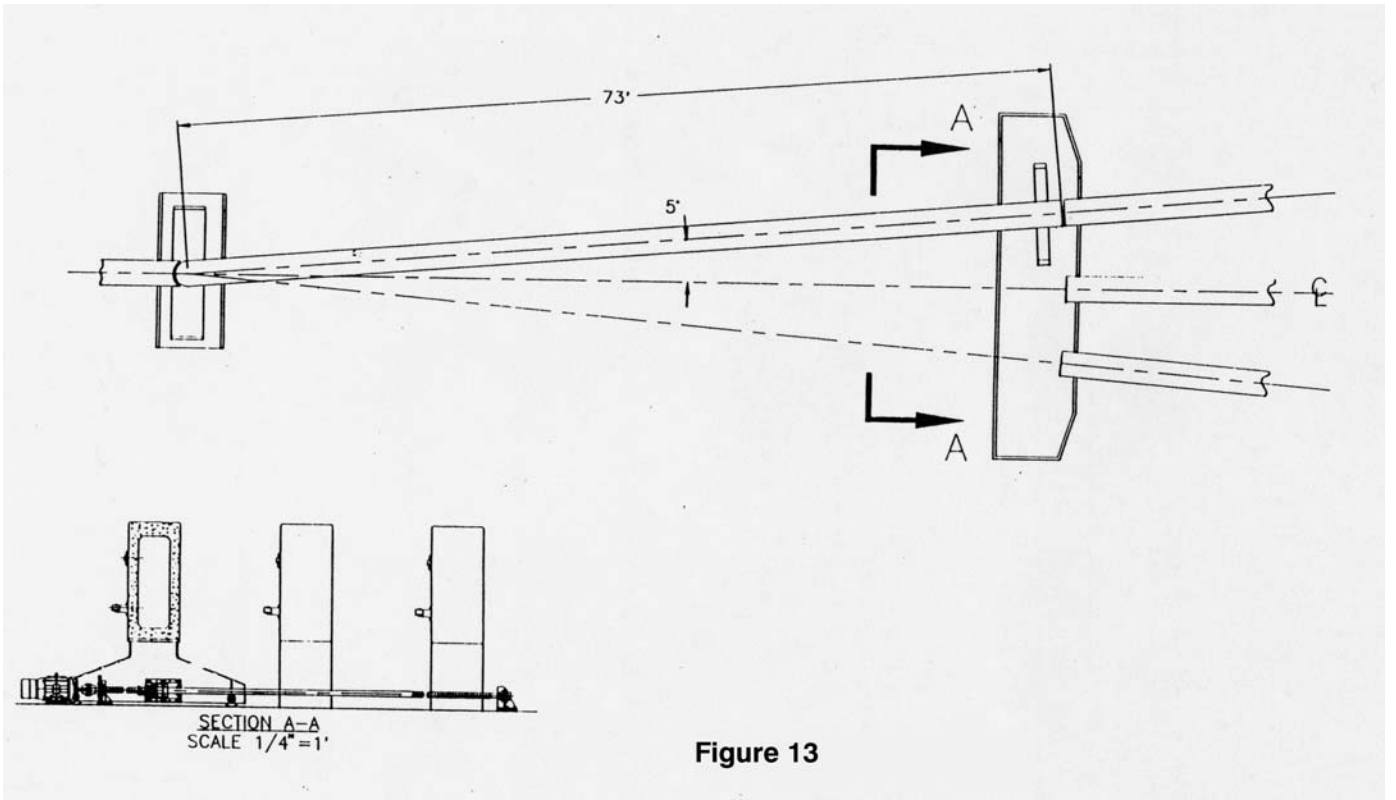
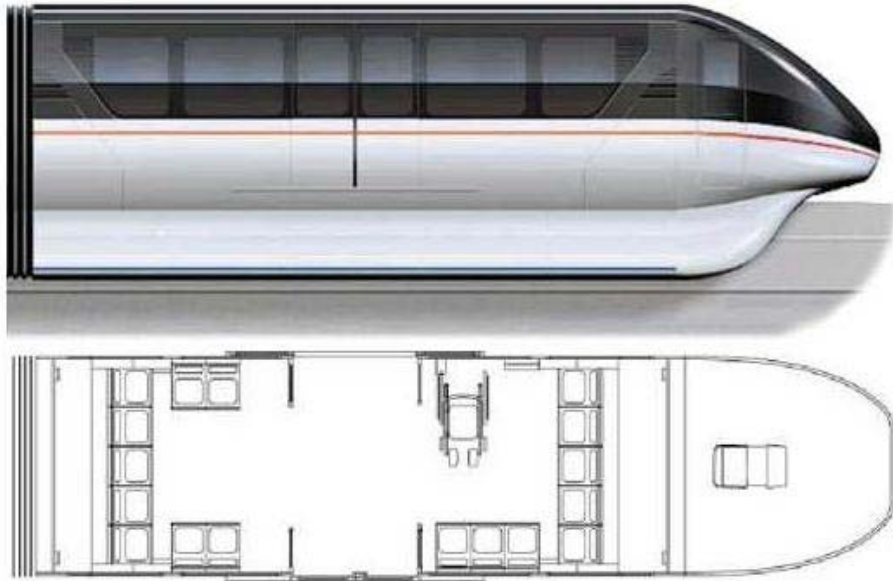


Figure 13

Figure 13. Pivot Switch



Las Vegas Monorail Team ©

Figure 14. Rendering of Vehicle Interior

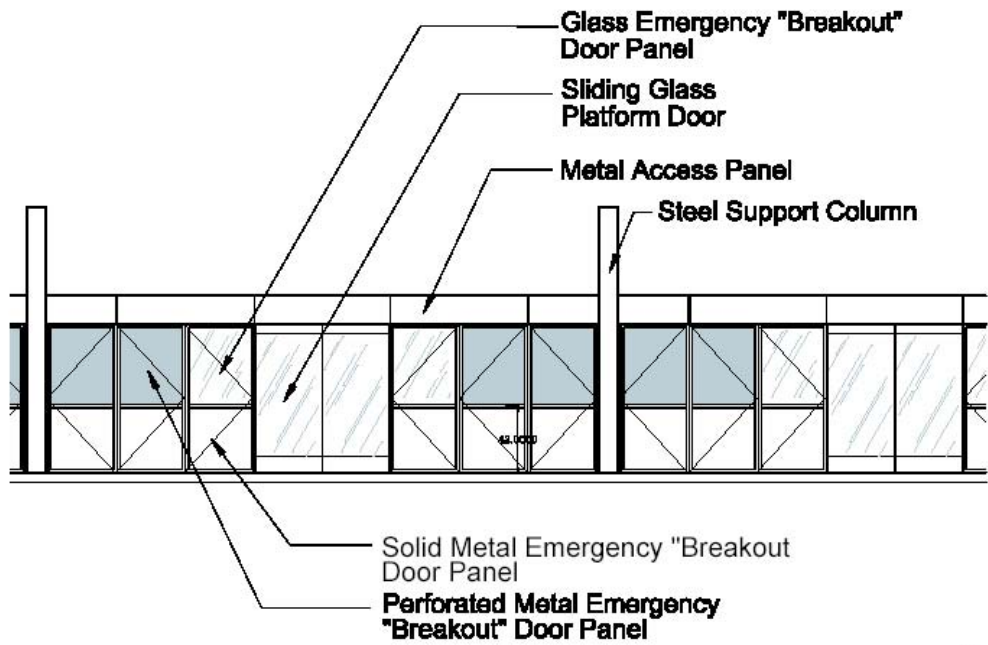


Las Vegas Monorail Team ©

Figure 15. Interior Configuration



Figure 16. M-VI Vehicle at Las Vegas Hilton



Gensler
of Nevada

Figure 17. Station Platform Doors